

AMERICAN BUILT, AUSSIE TESTED.

Maytag Commercial has reinvented the top load washer and built the Toughest Commercial Washer to ever roll out of its dedicated American factory.

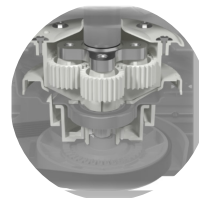
Rebuilt from the ground up, with Reinforced Adjustable Feet all the way up to a New Full-Wrap Easy-Access Top Console, this machine is designed with one thing in mind, reliability for you.

Machine downtime costs you and your business, which is why Maytag Commercial have made the below part upgrades, to name just a few;

- **Stronger 1/2-HP PSC Motor**
- **New OH&S Compliant Lid Lock** that *only* locks during final high spin extraction
- **New Durable 7 Rib Belt** provides greater torque
- **New Weep Hole Design** to protect seals
- **Triple-Lip Cartridge Seal with Garter Spring** provide a more effective seal, protecting the shaft and bearings from moisture and water vapor
- **Upgraded, sealed premium bearings** enhances the machine's durability and help extend the longevity of the drive system by minimizing friction
- **Easy-Access Steel Base** for simple servicing
- **Thicker Galvanized Side Panels** are proven to be durable in the harshest conditions
- **Thicker Galvanized Removable Front Panel** for easier servicing
- **Full-Wrap Console** is easy to clean and protects all internal components from liquids or vapors

MAT20MN TOP-LOAD WASHER WHAT'S NEW?

MAYTAG
COMMERCIAL LAUNDRY®



DEPENDABLE
LAUNDRY SOLUTIONS